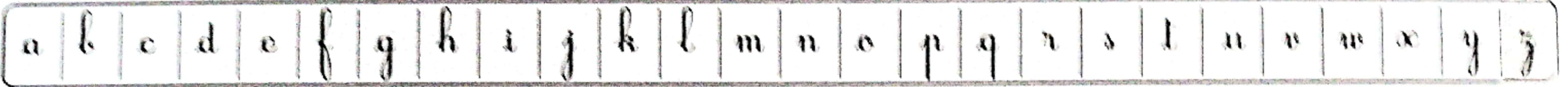


Reconnaitre la lettre cursive z  
Décomposer le tracé de la lettre z pour mieux maîtriser le geste grapho-moteur.

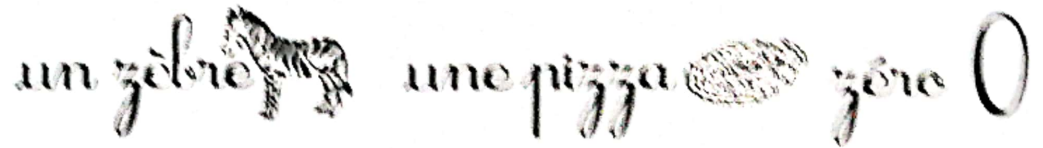
ÉLÈVE :

DATE :

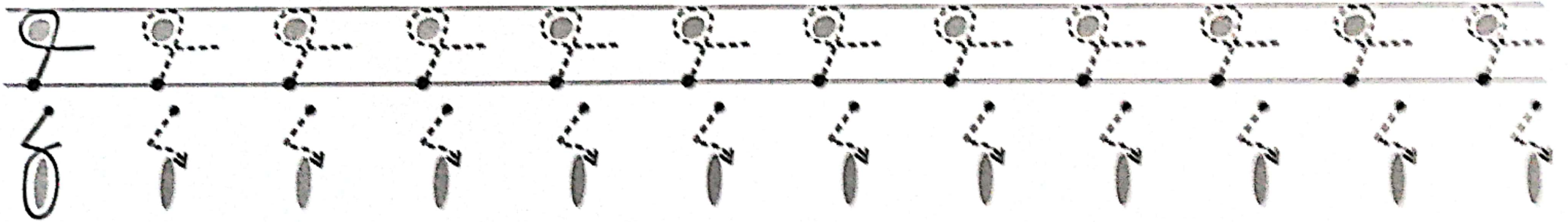


1. Entoure la lettre z

2. Entoure la lettre z dans les mots suivants.



3. Observe le modèle et continue de tracer les graphismes.



4. Observe le modèle puis repasse sur les lettres.



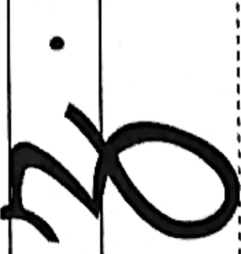
# CURSIVES ENTRE DEUX LIGNES

92

Tracer la lettre cursive z entre deux lignes. Copier des mots en cursive entre deux lignes.

ÉLÈVE :

DATE :



Handwriting practice lines for the cursive letter 'z'. Each row consists of a solid top line, a dashed middle line, and a solid bottom line. The first row contains a large cursive 'z' with a starting dot. The second row contains a large solid cursive 'z' with a starting dot. The third row contains a medium-sized solid cursive 'z' with a starting dot. The fourth row contains a small solid cursive 'z' with a starting dot.

